



Material Comp

Material Comp User Guide

Welcome to VoosteQ

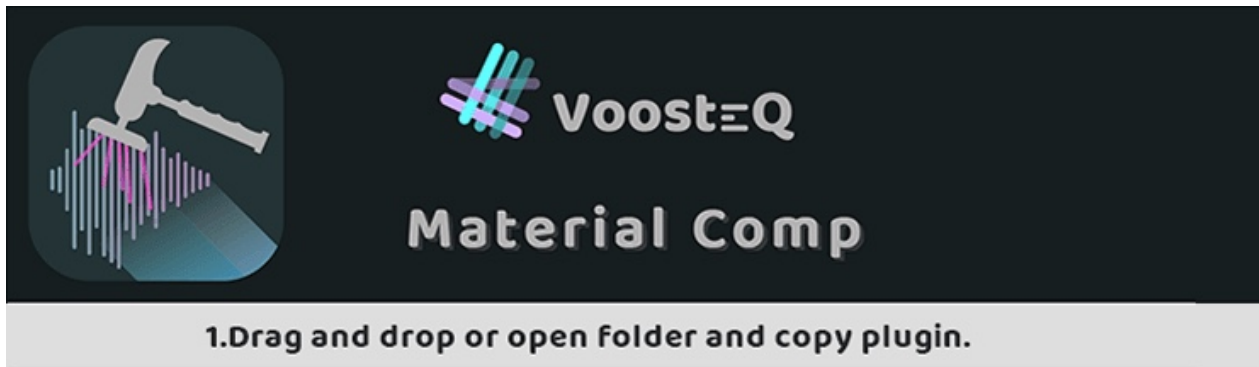


Thank you for choosing VoosteQ!!!

If you are already using another compressor, Material Comp is simple and easy. But, Material Comp has a unique parameter, which makes it much more than just another compressor. This manual will provide you with all the information of Material Comp. Have fun!

VoosteQ
support@voosteq.com
www.voosteq.com

How to install(mac)



1. After the payment is completed, the download URL will be sent to the registered e-mail address. Please download it.
2. Open the downloaded dmg and the above folder will open.
3. Drag and drop the plug-in formats you want to use to each folder.
- * If you cannot drag and drop directly on macOS Mojave (10.14) or macOS Catalina (10.15) and macOS Big Sur(11.0), Open the folder and drag and drop.
4. If the password entry screen is displayed, enter your mac password.

The installation is now complete.

After payment is completed, you will receive a serial number from Keyzy (license issuing service) to the registered email address.

Proceed to the next "Authorization".

How to install(Windows)

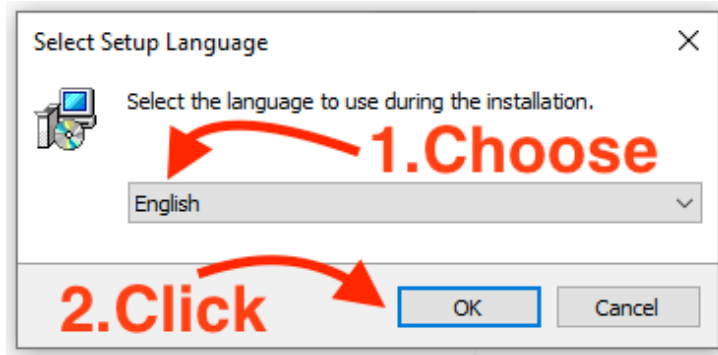
1. After the payment is completed, the download URL will be sent to the registered e-mail address. Please download it.
2. Install the downloaded installer according to the following procedure.
3. If the password input screen is displayed, enter your Windows password.

The installation is now complete.

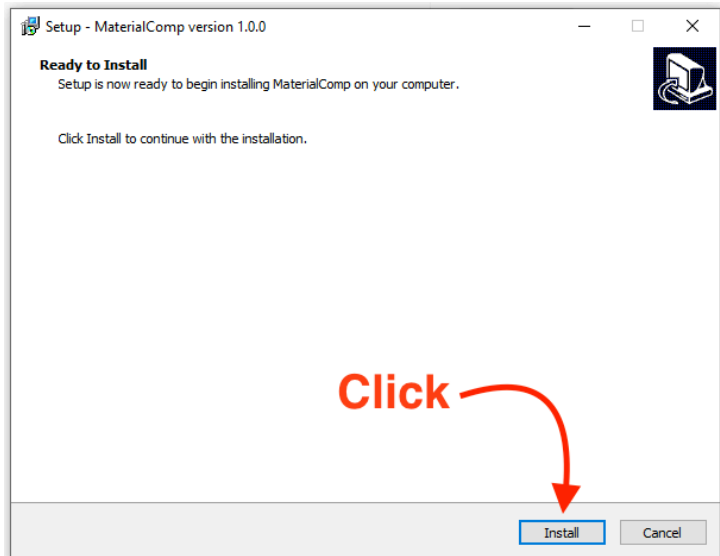
After payment is completed, you will receive a serial number from Keyzy (license issuing service) to the registered email address.

Proceed to the next "Authorization".

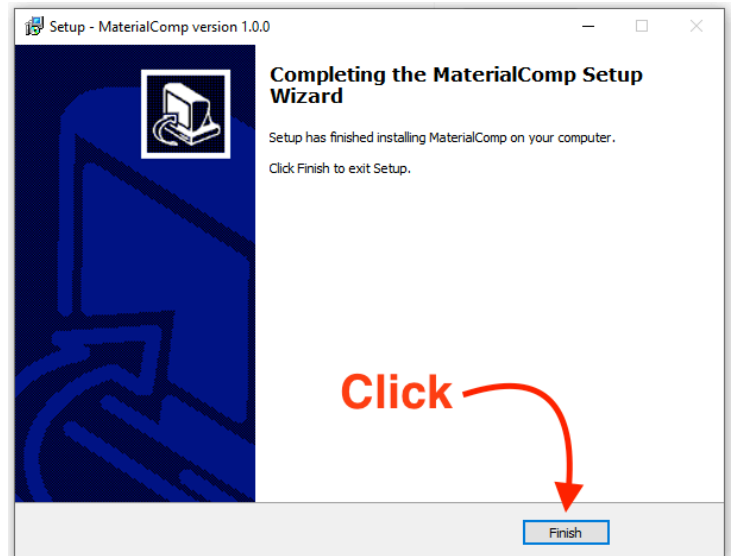
1



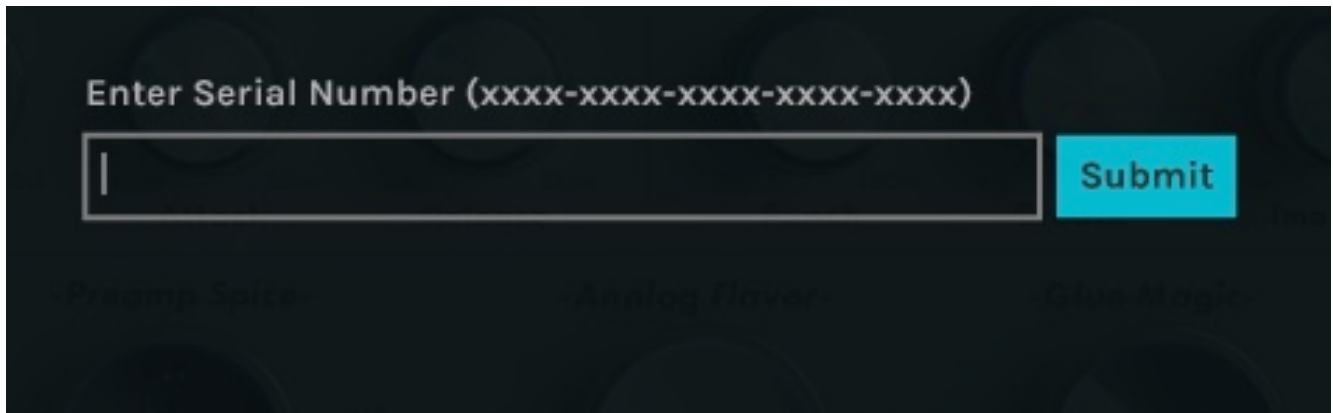
2



3



Authorization

The image shows a dark-themed user interface for authorization. At the top, it says "Enter Serial Number (xxxx-xxxx-xxxx-xxxx-xxxx)". Below this is a long, empty text input field with a vertical cursor on the left. To the right of the input field is a bright blue button with the word "Submit" in white. At the bottom of the screen, there are three faint, semi-transparent logos: "Material Comp", "Android Flavour", and "Game Magic".

The serial number will be sent to the registered e-mail address from Keyzy after payment.
Insert Material Comp into your host application
and enter the serial number you received.
The serial input screen is displayed by clicking the "Material Comp" logo in the header.

*Internet connection environment is required(for license authorization)

If the following message is displayed,
Authorization has been completed. Have fun!

Authorization has been completed!! Enjoy!!

If the following message is displayed, serial number is incorrect,
or there is no internet connection, or already authorized on three computers.
If you have any question, please contact us. support@voosteq.com

**The serial number is incorrect or there is no internet connection.
Contact support if authorization fails.**

Q&A

Q. How many computers can Material Comp's authorize?

A. Up to 3. Virtual environments such as VMware Fusion and Parallels Desktop are counted as one.

Q. Is it possible to delete an authorization?

A. Yes, it is possible. On the Mac / PC you want to deauthorize, click the "Deactivation : Open Window" in About Window and select "Deactivation".

*Internet connection is required to deactivate the authorization.

If you do not have an Internet connection, you will not be able to remove authorizations.

Q. In case of hard disk failure, is it possible to authorize to more than 3 computers?

A. Yes, please contact VoosteQ support.

VoosteQ

support@voosteq.com

Product Overview

What's a Material Comp?

A cutting-edge compressor that is equipped with "DFP" a technology that VoosteQ spent 3 years developing to thoroughly reproduce the nuances of an analog circuit.

Mastering grade signal processing technology can be achieved with an extremely low CPU load. The internal processing is fully 64 bit and produces sounds with unbelievable transparency.

It is equipped with 6 model compressors, preamp saturation that models 6 high-end analog devices, 8 simulations of analog circuits with hardware actually attached, and 4 glues that adhere magically.

Freely combine each of these inputs for flexible adaptation ranging from modern sounds used in top hits to unique retro analog sounds.

If you insert Material Comp, which has a completely analog sound with digital flexibility, you can add various forms of spices, flavors, and magic to your mix.

Feature

It features "DFP" VoosteQ unique analog circuit simulation technology.

6 model compressors.

preamp saturation that models 6 high-end analog devices

8 simulations of analog circuits with hardware actually attached.

4 glues that adhere magically.

Up to 2x oversampling

An extremely high-performance analyzer.

Cutting-edge transparent sounds through fully 64-bit internal processing.

Extremely low CPU load.

Stereo and mono plug-ins available

Up to 192kHz sample rates supported



1.Comp Mode

Equipped with the 6 analog model compressors of “Modern”, “60’s FET”, “Luxe VCA”, “Studio Master”, “OPTO”, “TUBE”.

2.Preamp Spice

Equipped with 6 saturation models of high-end analog preamps. This is used to generate skillfully designed analog preamp drive sounds, rather than strong distortion.

3.Analog Flavor

Equipped with 8 flavors that reproduce sounds from analog circuits. It thoroughly analyzes the ambiance, frequency, changes to the sound phases, and other elements made when actually passing through the circuit of hardware and reproduces them. It produces a completely analog sounds that cannot be reproduced using EQ.

4.Glue Magic

Equipped with 4 original glues developed by VoosteQ that bring together all sounds. It is extremely effective, such as when blending further after adjusting the compressor. It also has an effect on acoustic guitar and vocals, in addition to mix buss.

5. Special Section

The 3 features of the “Special Section” make the sounds of the Material Compressor even more appealing. It is equipped with “Punch,” which produces a more offensive attack to enhance the features of the sounds, “Groove,” which adds a groove that undulates in real time with the entry signals, and “Imager,” which expands in stereo using techniques used at mastering studios.

What's new in Material Comp v1.5 / 1.6 / v1.7

[New Features]

- Native support for Mac M1 machines.
- Added resize function.
- Added a mode to hide the graph and only show the meter.
- Newly designed header, graph section, slider, buttons, etc.
- Added external side-chain.
- Added Lookahead.
- Added "Auto mode" to Attack.
- Added "Auto mode" to Release.
- Changed Input, Output and SC Filter sliders to knobs.
- Support for Protools gain reduction meter (AAX).
- Reduced CPU load by up to 20%.
- Support for deactivation.
- Added update notification function.

[Other changes]

- Changed to hide unnecessary parameters when assigned to mono tracks.
- Added color contrast adjustment to the graph.
- Changed the order of the sliders in the subsections.
- Added function to lock parameters in Preset Browser.
- Changed the default meter scale from 60dB to 30dB.
- Improved sound quality around Nyquist frequency.

[Bug fixes]

- Improved the behavior of the A/B button when clicking Undo/Redo (Mac / Windows).
- Improved the unintended behavior of "Modern" in CompMode in some environments (Mac / Windows).
- Noise added to Preamp Spice in some environments has been improved (Mac / Windows).
- Improved the display timing of the gain reduction value (Mac / Windows).
- Fixed the problem that the knob operation becomes sluggish (Mac / Windows).
- Fixed the problem of slow animation (Mac / Windows).

QuickStart Guide



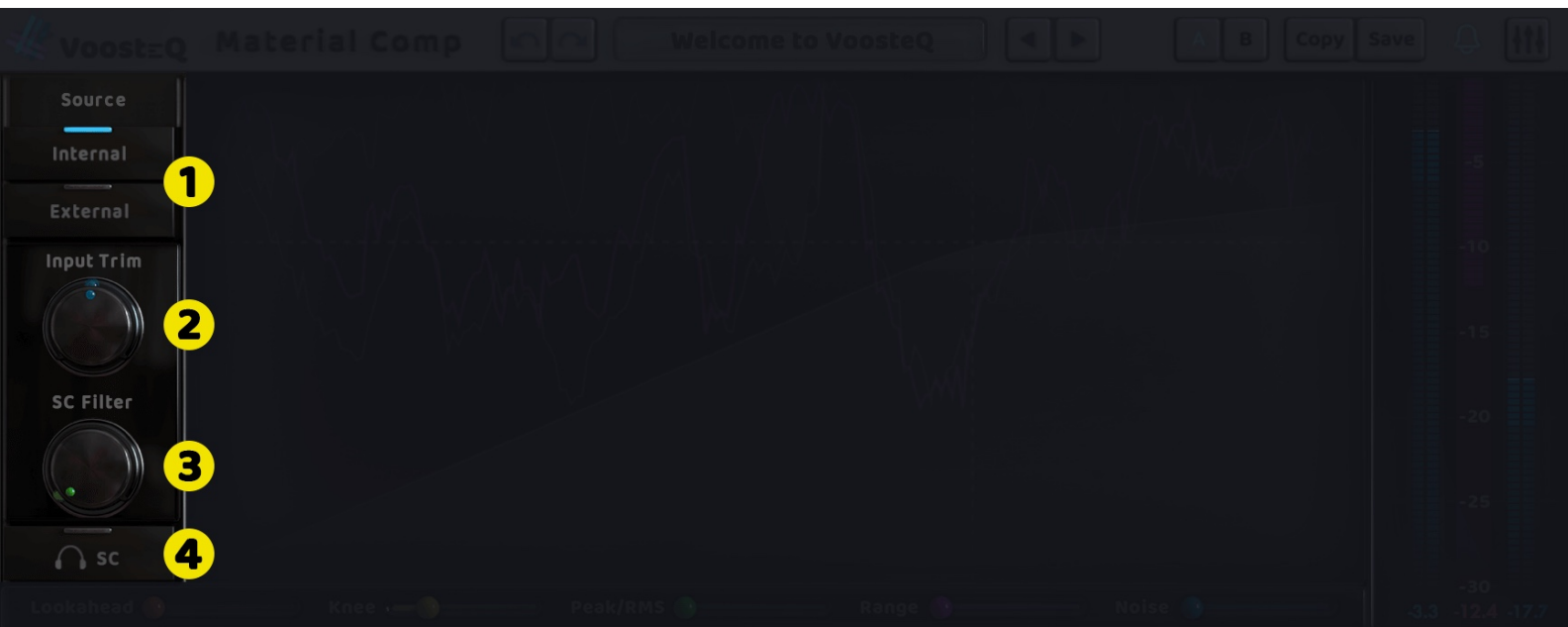
[Tips]

alt+click on a knob or slider to return to its default value.

Fine tune is (command+drag) on a knob or slider.

double click on the knob and slider to open the value window,
and directly enter the value from your keyboard.

Input Section



1.Source Select

Switch the input source between internal and external.

2.Input Trim

The input level is adjusted between -30.0dB and +30.0dB.

3.SC Filter

It filters out the lower level from gain reduction detection between 20Hz and 800Hz.

4.SC Filter Listen

When this is turned on, the frequency of the SC Filter can be monitored.

Compressor Section



1.Threshold

The threshold is adjusted between +2.0dB and -60.0dB.

2.Ratio

The ratio is adjusted between 1:1 and 1:20.

3.Attack

The Attack is adjusted.

The range of adjustment differs depending on the Compressor Mode.

[60's FET] 0.02ms - 0.8ms

[Modern][Luxe VCA][Studio Master][OPTO][TUBE] 0.1ms - 250ms

4.Auto Attack

When turned on, the attack is automatically varied according to the input signal.

5.Release

The Release is adjusted.

The range of adjustment differs depending on the Compressor Mode.

[60's FET] 50ms - 1000ms

[Modern][Luxe VCA][Studio Master][OPTO][TUBE] 1.0ms - 500ms

6.Auto Release

When turned on, the release is automatically changed according to the input signal.

Special Section & Output Section



「Special Section」

1.Punch

It detects inputs using an original feature that Voosteq developed to add a stronger attack. It is effective on vocals, drums, pianos, and others.

2.Groove

It detects the inputs and adds the most effective groove. It is also effective on drums and guitars, in addition to master buss.

3.Imager

It expands the medium level and above in stereo without affecting the lower level. It only works with stereo input.

「Output Section」

1.Output

The output level is adjusted between -30.0dB and +30.0dB.

Additional Section



1.Lookahead

Adjusts the time (Off - 20ms) to avoid missing attack detection.
The latency of the set value (0ms-20ms) will occur.

2.Knee

The knee value for the compressor can be adjusted between hard knee to soft knee.

3.Peak/RMS

It changes the Compressor detection to Peak or RMS.

Peak is more accurate, RMS provides a better indication of how people perceive the signal loudness.

For inputs with strong attacks, it is better to lean toward Peak, while for bass, master buss, and others, it is better to lean toward RMS.

4.Range

The maximum value for gain reduction can be fixed between -60.0dB and -1.0dB.

5.Noise

Noise that has been directly sampled from a British studio console is added.

Comp Mode



Choose from a number of 6 different compressor mode.

1.Modern

Extremely modern original sounds developed by VoosteQ.
It provides a wonderful quality regardless of the inputs.
If you apply it strongly, it will generate a slight distortion.

2.60's FET

A model of the FET Compressor, which is standard at studios.
Field Effect Transistor compressors are known for their fast transient response.
It is similar to the original in that it stands out for its very fast attack and sticky release.

3.Luxe VCA

A luxurious model of the VCA compressor, which was recently released,
that has the clearest sound among all types.
It can be used for various sources because it has a fast response to transient sound.

4.Studio Master

A sound for master buss.
It is an extremely unique sound that does not cause distortion even when it is applied strongly.

5.OPTO

A model of an expensive optical compressor.
It has the characteristic warmth of original hardware and a gentle attack.
It is optimal for vocals, bass, and buss.

6.TUBE

A model of a vacuum tube compressor in good condition.
It generates the very slight distortion of a vacuum tube just by passing through it.

Preamp Spice



Choose from a number of 6 different Preamp Spice mode.

1. Harmonic

A sound with a very delicate analog feeling regardless of the inputs.

2. Analog

A saturated sound that is designed for slight thickness.

3. Smoggy

The sound of an original preamp made of vintage parts from the '60s.
A complex, cloudy sound with even and odd harmonics.

4. Tape

An extremely silky sound that is made when passed through a tape.
There is also a changed frequency through a saturation circuit with a tape speed of 15ips, which cannot be reproduced using EQ.

5. Class A HOT

A warm sound using class A.

6. Class A COOL

A rather dark sound using class A.

7. Preamp Mix

Adjust the mix amount for Preamp Spice.

Analog Flavor



Choose from a number of 8 different Analog Flavor mode.

*Analog Flavor models the signal that is actually passed through an analog cable, so the Master Section MIX cannot be applied to avoid variance in the phase.

1.Bypass

Bypass Analog Flavor.

2.Rich Buffer

An emulation of a sound made when passed through a buffer that costs over ¥300K. The clarity of a trans circuit is also added.

3.N-Type

The sound made when passed through a major British console found in studios around the world.

4.S-Type

The sound made when passed through a major British console found in studios around the world.

5.USA M Console

The sound made when passed through an American mixer found in home studios.

6.British Green

The sound made when passed through a British compressor that is famous for its green hardware.

7.Cheep Console

The sound made when passed through an American mixer found in extremely inexpensive home studios.

8.60's Surf

The sound made when passed through vintage hardware from the '60s.

9.Analog+

A sound that adds an analog ambiance when passed through an audio cable only.

[note]

It is legal for Analog Flavor and Over Sampling to be automatable.

but Automating Analog Flavor and Over Sampling

that affect the Plug-In's latency is discouraged.

special care must be taken with Automating Analog Flavor and Over Sampling.

Glue Magic



Choose from a number of 4 different Glue Magic mode.

1.Studio Console

This mode models the glue effect of the master buss of a British console. It adds unity to all sounds and not just master buss.

2.Aggressive Pumping

It adds a pumping effect.

The sound becomes more attacking when it is applied strongly.

3.Pop Tune

It makes a bright sound according to the reduction amount.

4.Deep Bass

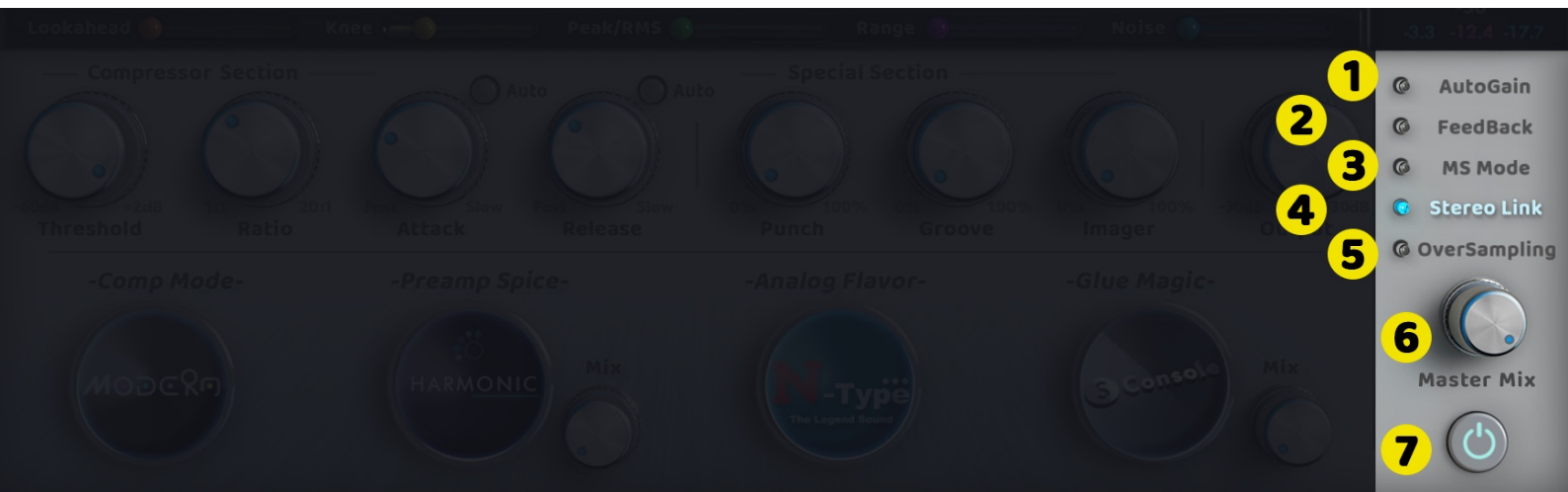
It is optimal for sounds that have emphasized bass.

5.Glue Mix

Adjust the mix amount for Glue Magic.

It is recommended to adjust this to around 10-50%, such as when blending further after adjusting the compressor.

Master Section



1.AutoGain

The volume is automatically adjusted based on the parameters.

2.FeedBack

When this is turned on, the Compressor detection action will be changed from Feedforward to FeedBack. FeedBack is a method of reproducing a vintage circuit by returning the reduced signal to the input.

3.MS Mode

A mode that changes the gain reduction detection method to MS. It only works with stereo input.

4.Stereo Link

Gain reduction detection is stereo linked. When this is turned on, the stereo balance can be maintained for master, drum buss, and others. It only works with stereo input.

5.Over Sampling

Use this button to on/off Over Sampling.

[note]It is legal for Analog Flavor and Over Sampling to be automatable. but Automating Analog Flavor and Over Sampling that affect the Plug-In's latency is discouraged. special care must be taken with Automating Analog Flavor and Over Sampling.

6.Mix

Adjust the mix amount for the processors other than Analog Flavor.

7.Bypass

Bypass all processors.

Graph Section



1.Waveform&GainReduction Curve

Display the input, output and gain reduction curve through a graph section.

Hover the mouse cursor over the left side of the graph section to see the button for changing to meter mode.

Click on the displayed icon to change the display to meter mode.

2.Meter

Displays the input and output signal level(Peak, RMS, Hold) on a decibel scale.

Click the meter itself to change the display to meter mode.

3.Numerical display

Peak level and gain reduction values are displayed numerically.

Meter Section



1.Meter

Displays the input and output signal level(Peak, RMS, Hold) on a decibel scale.
Click the meter itself to change the display to graph mode.

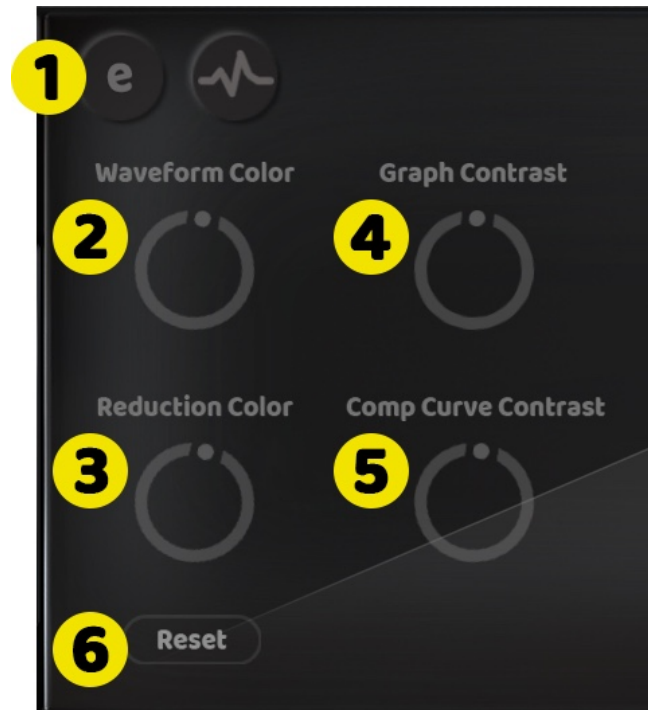
2.Numerical display

Peak level and gain reduction values are displayed numerically.

3.Expand

Change the display to graph mode.

Color Edit Section



1.Editor

Hover the mouse cursor over the left side of the graph section to see the "e" button for color adjustment.

Click on it to display the parameters for adjustment.

2.Waveform Color

Adjust the waveform color of the graph section.

3.Reduction Color

Adjust the gain reduction color of the graph section.

4.Graph Contrast

Adjusts the contrast of the waveform in the graph section.

5.Comp Curve Contrast

Adjusts the contrast of the compressor curve.

6.Reset

Resets the settings in the Color Edit section.

Header Section



1.Undo/Redo

Undo button: Cancels the last operation and rollback to previous plugin setting.

Redo button: Does previously cancelled operation again.

2.Patch Name

Display the selected patch name.

an asterisk will be added to the Patch name when a change parameter.

3.Preview/Next

Select one before and one after the Preset Browser.

4.A/B

Toggle the A/B comparison of the parameters.

5.Copy

Copy the current parameters to B,

when A is selected for the parameter settings and to A when B is selected.

6.Save

Save the current parameter information to the patch.

The save path is as follows.

Mac: /Users/[Your Username]/Documents/VoosteQ/Material Comp/Asset/Preset/UserPreset

Win: C:\Program Files\Common Files\VoosteQ\Material Comp\Preset\UserPreset

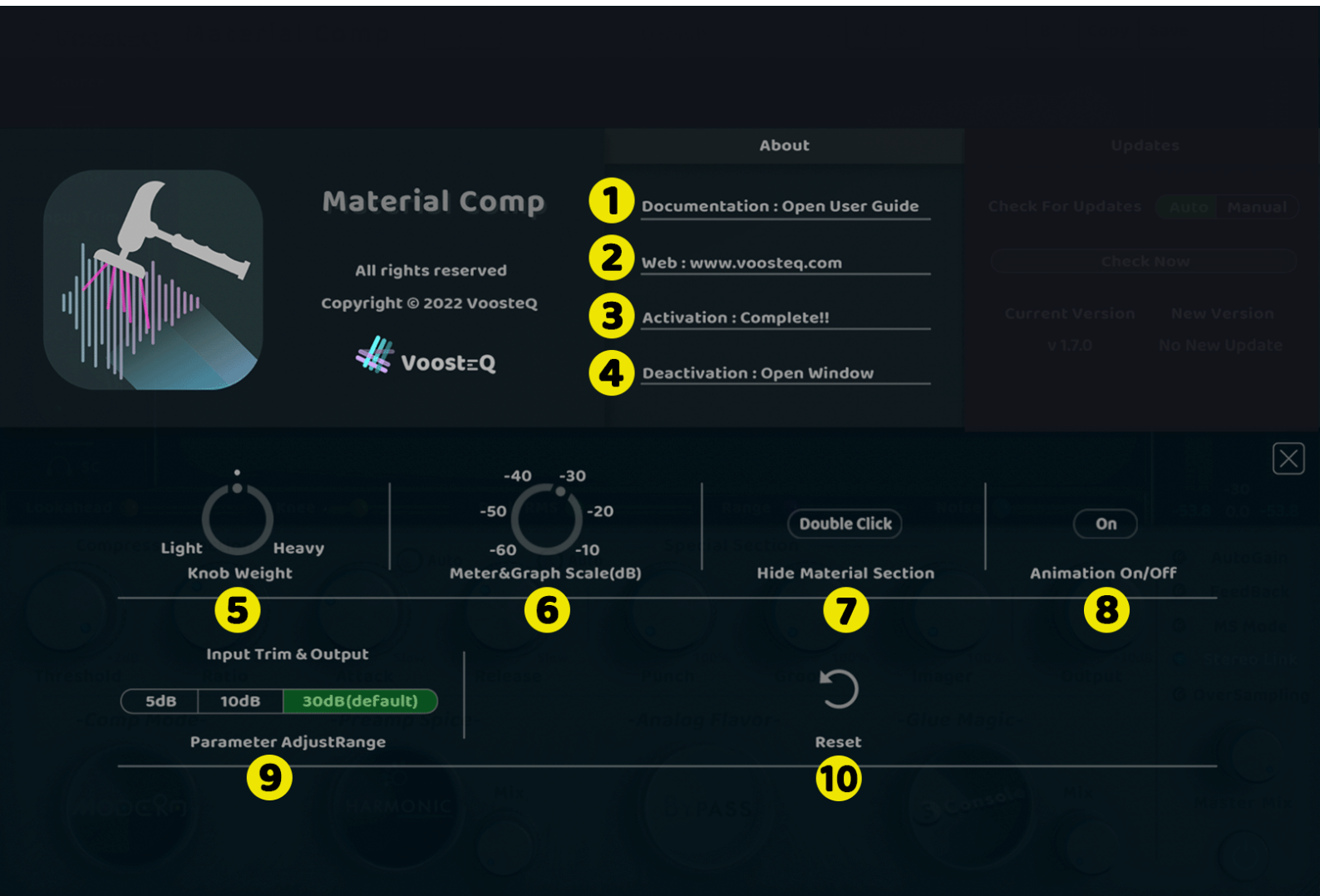
7.Notification

If there is an update, a notification icon will be displayed.

8.About

Display the About Window.

About Window



1.Documentation

Open this manual(PDF).

2.Web

Open the VoosteQ website in the default browser.

3.Activation

Displays the status of authorization.

4.Deactivation

Open the window for deactivation.

If you want to deactivate the authorization from your computer, click Deactivation, then click Deactivation in the alert window.

5.Knob Weight

Adjust the weight of the knob.

6.Meter&Graph Scale(dB)

Changes the display scale of the meter and graph. (-60dB - -10dB)

7.Material Section “Hide”

Switch between double-click and single-click to close the material window when material is selected.

8.Animation On/Off

Switches the animation of the material section on and off.

Off is recommended if the animation is slow in your environment.

9.Parameter AdjustRange

Changes the adjustment range of Input Trim and Output.

This function is for fine adjustment without the need to change up to $\pm 30\text{dB}$.

For example, if you set it to 5dB, the knob will display up to $\pm 5\text{dB}$, but if you continue to operate the knob further, you can adjust up to $\pm 30\text{dB}$.

10.Reset

Resets the settings from 5 to 9 to the factory defaults.

Updates



This function allows you to check for updates and confirm the version.

An Internet connection is required to check for updates.

1. Check For Updates

"Auto" will automatically check for updates, while "Manual" requires you to click "Check Now" to check for updates.

2. Check Now

Checks if there is an update. Internet connection is required.

3. Current & New Version

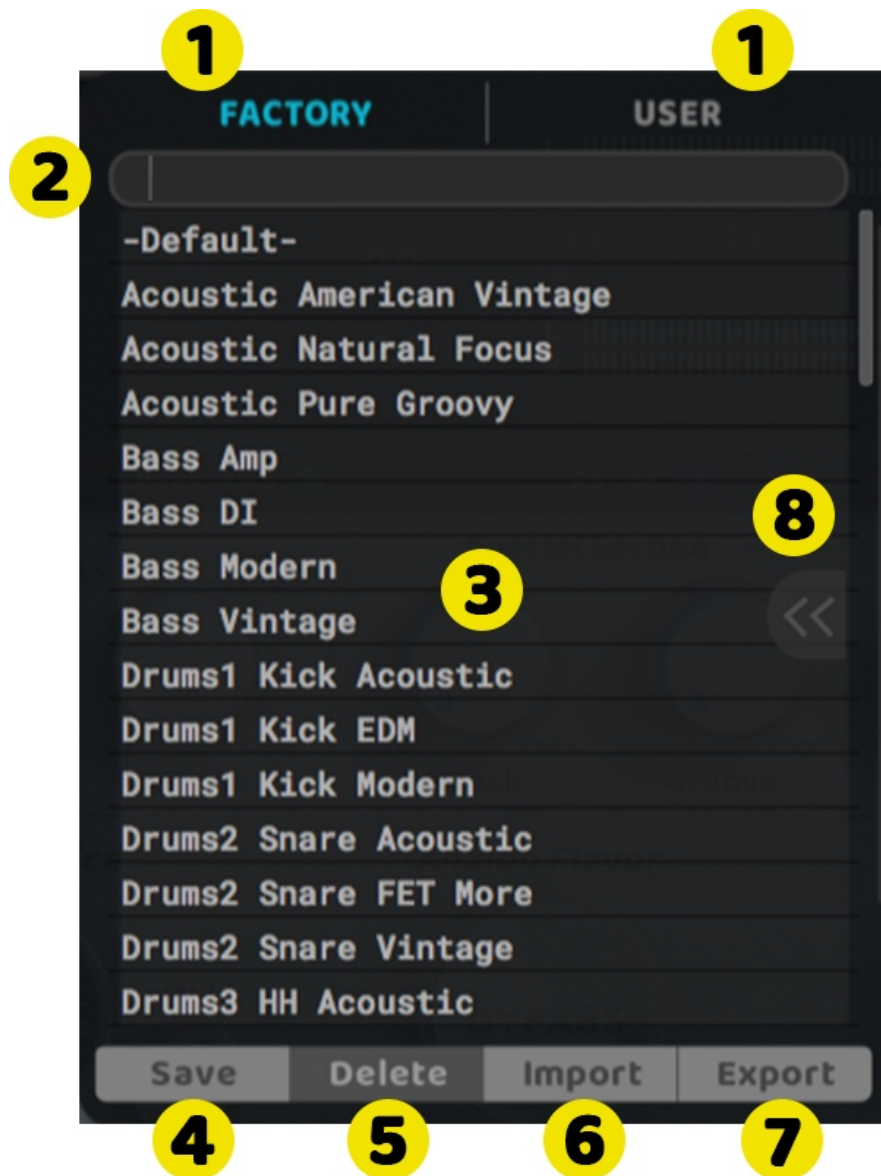
Displays the current version and the version if there is an update.

4. Download Updater

Displays the current version and updates, if any.

Click to download the updater with default browser.

Preset Browser



1. Bank Selector

Select from Factory Bank or User Bank.

Factory presets cannot be over-written or deleted.

User Preset are your favorite settings.

User Preset can be over-written and deleted.

User Preset is not available in the initial state, so save your cool preset yourself.

2. Search Window

You can search for the patch in the search window.

3.Preset Selector

Select from Factory Preset or User Preset.

4.Save

This is the same as the save function for the header section's save.

5.Delete

Delete the currently selected patch.

6.Import

Import an external file.

If you only import, the parameters will just be updated.

Please save it if you would like to do so.

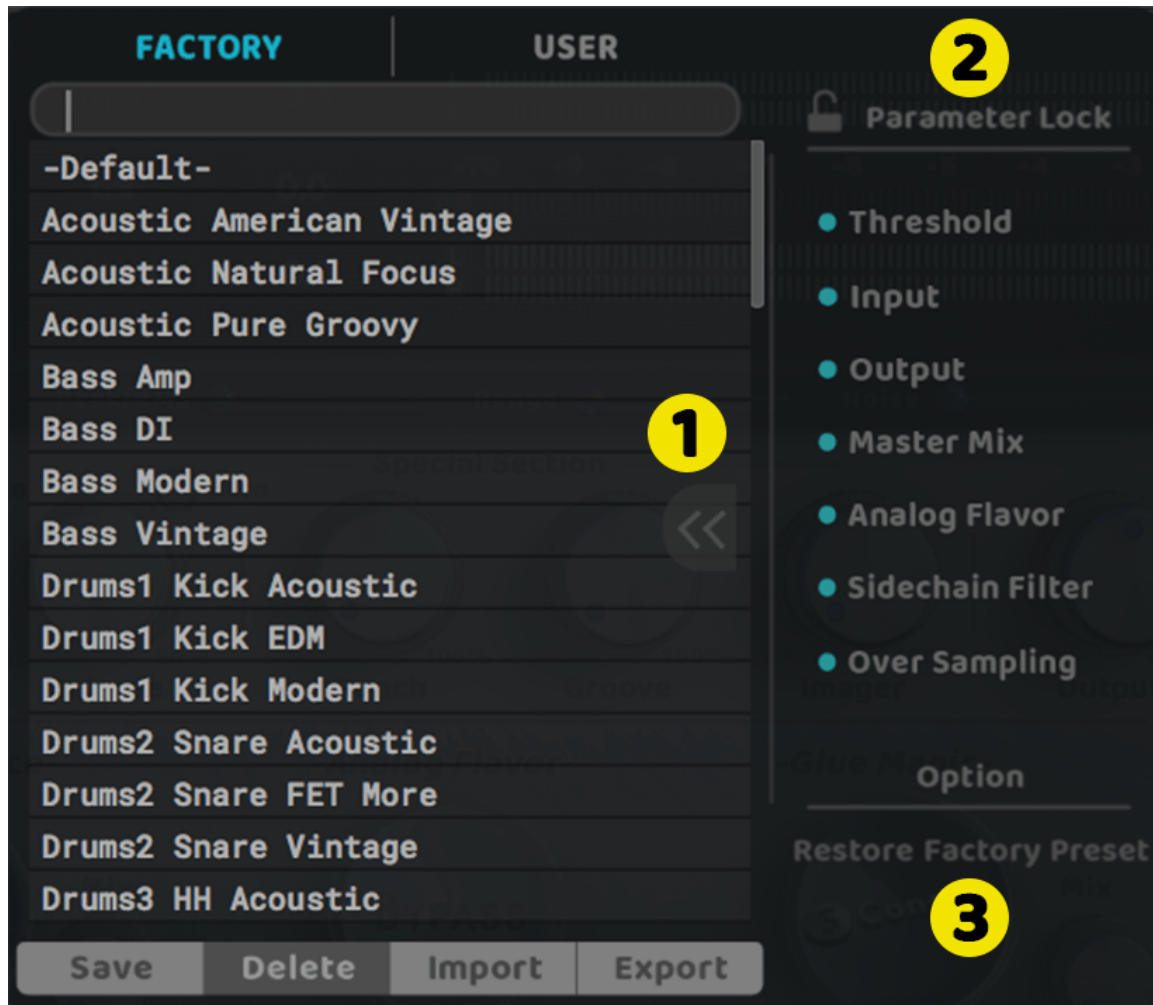
7.Export

Export the current parameters.

8.Preset Browser Option

Option is displayed when you click the button(see below).

Preset Browser Option



This is displayed when you click the button to the right of the Preset Browser search window.

1.Preset Browser Option

Option is displayed when you click the button.

2.Parameter Lock(Threshold, Input, Output, Master Mix, Analog Flavor, SC Filter)

It sets a lock so that the threshold, input, output, master mix, Analog Flavor, SideChain Filter and Over Sampling values do not change when loading the preset.

The settings will be valid until you close the host application.

3.Option(Restore Preset)

It will restore the Factory Preset when it has been deleted.

Requirements

Mac OS X requirements

Mac OS X 10.13 or higher

AU or VST2/3 or AAX Native (Pro Tools)

Apple Silicon(M1) & Intel processor

Windows requirements

Windows 10

VST2/3 or AAX Native (Pro Tools)

Plugin Formats:

AAX (64-bit), AU, VST2, VST3

*All formats are 64-bit only.

Available in Audio Units, VST, VST3, AAX Native(64-bit only)

Pro Tools (Mac & PC: AAX Native)

Logic Pro (Mac: AudioUnits)

Ableton Live (Mac: AudioUnits & VST2/3, Windows: VST2/3)

Cubase (Mac & PC: VST2/3)

Studio One (Mac: AudioUnits & VST3, Windows: VST3)

Internet connection environment (for license authorization)

You will need at least 500MB (when installing) of free space on your hard disk for installation.

For smooth operation, we recommend installation on a computer with a CPU with fast processing speeds and plenty of RAM memory.

In order to use this product, you will need to authorize it using the internet.

For authorization, an internet connection and the serial number sent to your email address during the purchase will be needed.

Offline authoring (deactivating the authored computer) is also supported.

The product specifications listed here could be changed without notice.

Because this is a downloadable product, there will be no returns or refunds.

VoosteQ Software License Agreement

“VoosteQ” and associated logos are registered trademarks of VoosteQ.

VST is a trademark of Steinberg Media Technologies GmbH,
registered in Europe and other countries.

AAX, Pro Tools, and RTAS are trademarks or registered trademarks of Avid Technology,
AudioUnit, OSX are trademarks of Apple Inc.

All other product / company names are registered trademarks of their respective owners.

You are not allowed to copy or distribute the full version of any VoosteQ product.

It is a violation of international copyright laws to give copies to other people.

The VoosteQ Products is a commercial program.

You may not reverse engineer, reverse compile, or disassemble any of the files in the products.

The VoosteQ Products or the information in this document is subject to change without further notice and shall not be deemed as an obligation or warranty of any kind by the manufacturer.

No warranties are made with regard to the quality, accuracy of this document.

VoosteQ reserves the right to change the contents of this document and the VoosteQ products at any time without the provision of prior notice.

VoosteQ shall not be held liable for damages of any kind arising from the use, or the inability to use this product and all VoosteQ Products.

The serial number that you receive when purchasing it is personal and confidential.

Be sure to also see the Terms and Conditions at www.voosteq.com.